

ABOUT TIMES-7

We are a high-tech company specializing in the design and manufacture of RAIN (UHF) RFID antennas. Founded in 2006, Times-7 has developed the largest portfolio of fixed RAIN RFID reader antennas. Based in Lower Hutt, New Zealand we export all over the world through an authorized network.

Times-7 antennas are famous for their quality and performance.

In addition to our world-class products and in-depth expertise, our customers appreciate Times-7's customer service and technical support.

We are responsive in supporting a large global customer base and ensuring the success of our customer's implementations.

Times-7 Research Ltd
10 Te Puni Street, Lower Hutt
New Zealand.

NEW ZEALAND
P: +64 4 974 6566

USA/CANADA
P: +1 408 769 5025

E: sales@times-7.com

www.times-7.com



Patent Info: www.times-7.com/patents



The A6590C Ground Antenna

Ultra-low profile circularly polarised UHF ground antenna

Just 8 mm / 0.3 in. thick

Powerful 9 dBic gain

Typical applications:
Conference attendee & people tracking, retail marketing, race & event timing

Part of our exclusively unique range of ground antennas the A6590C is optimized for RFID deployments involving moving products, assets and people. From conference attendee & people tracking, retail presence aware / loyalty marketing & race timing, the A6590C is ideal for applications where traditional side antennas are unsuitable or not optimized for the application. At just 8 mm / 0.3 in. thick, the durable, high performance A6590C is uniquely capable of lying flat on the ground within a doorway sized footprint.

Order Information

Ordering Information (please quote product code, band / cable type & part no.)

*Antenna Product Code	Band	Part No.
A6590C	ETSI 865-868 MHz	71324
A6590C	FCC 902-928 MHz	71325
Cable Accessories Product Code	Cable Type	Part No.
Cable 2 m, SMA to RPTNC	T7 195 / 240 / 400	71436 / 71782 / 72042
Cable 4 m, SMA to RPTNC	T7 240 / 400	71784 / 72043
Cable 6 m, SMA to RPTNC	T7 240 / 400	71904 / 72044
Cable 8 m, SMA to RPTNC	T7 240 / 400	71788 / 72045

*Built in New Zealand. ROHS & CE compliant.

View the Times-7 Cable Accessory datasheet [here](#)

Physical / Environmental Specifications

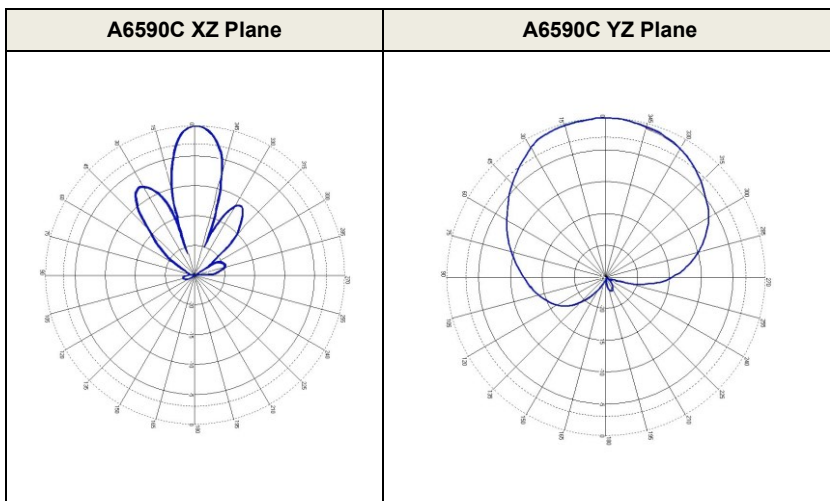
Physical / Environmental Specifications

Dimensions	915 mm x 305 mm x 8 mm
Length (x) x Width (y) x Depth (z)	36.02" x 12.00" x 0.31"
Boxed unit dimensions:	935 mm x 315 mm x 25mm 36.81" x 12.40" x 0.98"
Weight:	Net: 2.4 kg / 5.29 lbs. Gross: 2.8 kg / 6.17 lbs.
Radome Material:	Fire retardant ABS
Environmental Rating:	IP65
Operating / Storage Temperature:	-20° to +55°C / -30° to +65°C -4° to +131°F / -22° to +149°F
Connector type / position:	SMA female side fly lead (300 mm / 1 ft.) or 6ft / 2m cable to RP-TNC Plug

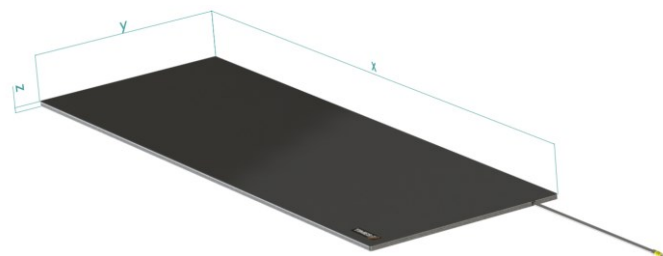
Electrical Specifications

Frequency Range:	865-868 MHz / 902-928 MHz
Polarization:	RHCP (Right Hand Circular Polarised)
Far-field Gain:	9 dBiC typical
Far-field 3 dB beamwidth: *	20° in xz-plane, 80° in yz-plane
VSWR	1.4 typical
Front to back ratio:	24 dB
Axial Ratio:	2 dB typical
Nominal impedance:	50 Ω
Anti-static protection:	Yes, DC grounded
Antenna detection	10 K Ω resistance
Maximum Input Power:	3 W

Radiation Patterns



Antenna Planes



Installation Instructions

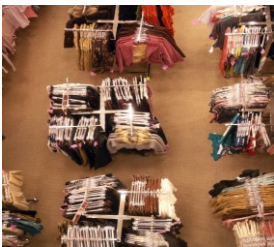
- Ensure that only finger tightness is used for the SMA connector. Use of tools to tighten the connector will apply excessive force and will damage the connector.
- Avoid any load or bending force from the cable on the connector.

Payload Information

- This ground antenna is designed to support moderate loads, such as hand trolleys and carts with rubber wheels, runners, bicyclists, and occasional vehicular traffic with pneumatic tires, etc. Care must be taken to ensure the antenna is installed on a smooth, hard, flat surface. Ensure that the antenna surface is not damaged from sharp objects such as steel-edged wheels, stone chips or glass fragments, etc. Any point load must not exceed 100 psi (7 kg/ cm²) and the maximum distributed load on the mat should not exceed 1100lb (500kg).

Applications

- Conference Attendee / People Tracking
- Retail Presence Aware / Loyalty Based Marketing
- Race & Event Timing



OUR GLOBAL NETWORK

In addition to our world-class products and in-depth expertise, Times-7 is known for their quality of customer service and technical support. We place emphasis on our responsiveness in supporting a large global customer base and ensuring the success of our customer's implementations.

Times-7 Research Ltd
10 Te Puni Street
Lower Hutt 5012
New Zealand

P: +64 4 974 6566

E: sales@times-7.com

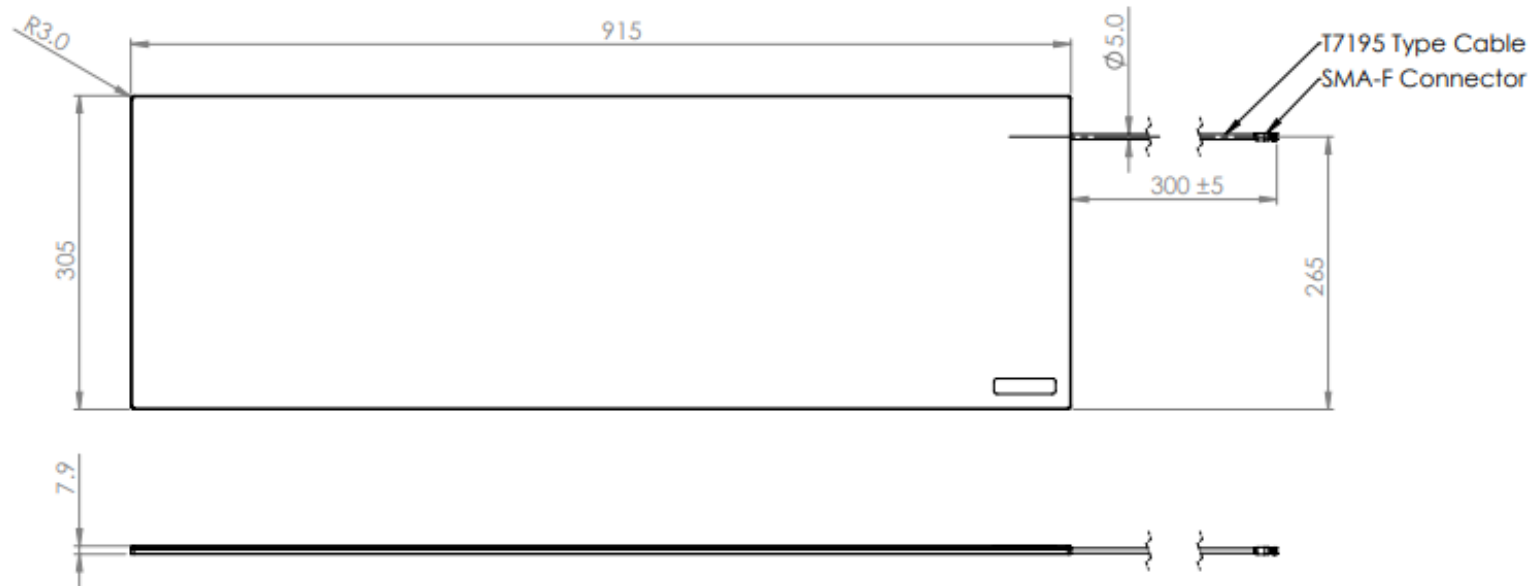
www.times-7.com

The technical data contained in this publication is not a guarantee for which Times-7 Research Ltd assumes legal accountability. It is indicative of typical performance, and if required should be relied on for specific applications only after due verification.

All technical data, specifications and other information contained herein are deemed to be the proprietary intellectual property of Times-7 Research Ltd. No reproduction, copy or use thereof may be made without the express written consent of Times-7 Research Ltd.

The Times-7 logo are trademarks or registered trademarks of Times-7 Research Ltd. All other trademarks are the property of their respective owners. © 2022 Times-7 Research Ltd. All rights reserved. Specifications are subject to change without notice. Datasheet v1.0

Mechanical Drawing for the A6590C



<small>THE INFORMATION CONTAINED IN THIS DRAWING IS THE SOLE PROPERTY OF TIMES-7 LTD. ANY REPRODUCTION IN PART OR AS A WHOLE WITHOUT THE WRITTEN PERMISSION OF TIMES-7 IS PROHIBITED.</small>		<small>DIMENSIONS ARE IN mm UNLESS OTHERWISE SPECIFIED TOLERANCES: NO DECIMAL PLACES ± 1 ONE PLACE DECIMAL ± 0.5</small>				DESCRIPTION <h3>A6590C Antenna</h3>	
DRAWN C Wilson	SIGNATURE 	DATE 27/05/2019	SIZE A3	PART NO. 71324 (ETSI) , 71325 (FCC)	REV B	DO NOT SCALE DRAWING	
APPROVED R Lopez	SIGNATURE 	DATE 11/06/2019	SHEET 1 OF 1				