



# RFID Pass Label

Dipole PASS is a family of RFID windshield tags that offer a more accurate and secure way to allow vehicle access or passage.

Dipole PASS allow to give access to places such as a community, company, ensuring corporate parking or a car wash. This label is designed to adhere itself to cars glass. The identification of the vehicle automates the control in the distribution process, product, passing through tolls, automatic opening

of doors or barriers. For all types of vehicles (boats, trucks, cars...). Dipole has a durable label that leaves no residue and resistant to external environments.

## Product benefits

- Possibility of tracking the product
- Fully customizable
- Easy to use and application
- Worldwide delivery

## 01

**The applications and preferred uses of RFID tags are:**

- Parking acces
- Tolls
- Rental Cars
- Ports
- Traffic management



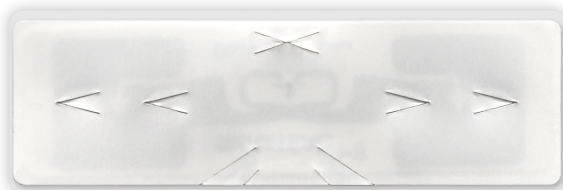
# 02

## Detalles del producto

<b>Frecuency</b>	UHF (860-960 MHz)
<b>IC type</b>	Impinj / NXP / Higgs
<b>EPS Memory</b>	Depending of IC Family
<b>Material</b>	Polyester
<b>Standards</b>	ISO 18000-6C Class 1 Generation 2
<b>Adhesive</b>	High resistance
<b>Size</b>	100mm x 33mm - 3.94in x 1.3in
<b>Temperature</b>	-40 °C / +85 °C

# 03

## Product features



Customizable label designed to achieve the best solution for your needs.



Printable on all standard RFID printers worldwide.



Different internal IC depending on the memory that is required.



Multiple delivery formats for greater comfort and according to need.



### Headquarters

Corts Catalanes nº8, 5C  
08173 - Sant Cugat.  
Barcelona, Spain  
[www.dipolerfid.es](http://www.dipolerfid.es)

### In the world

Spain: +34 936 756 273  
France: +33 1 85 65 81 50  
USA: 203-219-4889  
[dipole@dipole.es](mailto:dipole@dipole.es)

All rights reserved. Total or partial reproduction is prohibited without the prior written consent of the copyright owner. The information presented in this document does not form part of any quotation or contract, is believed to be accurate and reliable and may be changed without notice.